



# Te Kauwhata Primary School

## Panui ~ Newsletter 18

1 November 2017

Kia ora koutou,

Our annual Calf Club was held two weeks ago, well done to all competitors and a big thank you to our organisers, judges, stewards and sponsors who ensure another successful day was held.

We are very fortunate to have the support of our local community in many ways here at school. This week I would like to acknowledge and thank Peplers Fine Foods for their generous donation of jams to use for our emergency lunch sandwiches. Also thank you to our local lady's Lions group for their ongoing donation that goes towards paying for the bread for these sandwiches - great community spirit!

Following our Cohort Entry policy consultation I can confirm that we are adopting this from 2018. More information will be available over the next couple of weeks via the office and also made available to all early childhood centres. Thank you to everyone who responded as part of our consultation process.

This Friday we warmly welcome our grandparents to school for a very special morning. We will start with assembly at 9am, followed by our school fitness programme then all our guests are welcome to visit their grandchildren's classes. At 10.30am morning tea will be served then a special early peek at the book fair is available for grandparents (between 11am and midday).

Term 4 is often the term when some 'silly' behaviours appear so we ask you to support us by reminding your children that we still have 6 weeks of school to go, and that positive and acceptable behaviour is still an expectation, thank you. There are exciting events ahead for this term and we wish for all children to be able to take part in them.

Ngaa mihi nui  
Vicki and team

### Term dates 2017

#### Term 4:

End of term 4 -  
Friday 15  
th December

#### Start date 2018

Term 1  
commences for all  
children on  
Wednesday 31st  
January 2018.

### Public Holidays 2017

Christmas Day -  
December 25th

Boxing Day -  
December 26th

## No School Lunches - Friday 3rd November

School lunches are NOT available to order this Friday 3rd November.  
Thank you for ensuring your child brings lunch this week. Thank you.



**10**  
days to go

[www.facebook.com/TKPSchoolFair/](http://www.facebook.com/TKPSchoolFair/)

## Gala Update

### **Whanau group grocery donations**

For the next four weeks leading up to the gala we are asking families to please donate one or more grocery item to our raffle hampers for the Gala. Please send your items in on Friday mornings and staff will allocate whanau points for the donations. Please don't send anything that requires refrigeration. The kind of items we are looking for are:

- Canned fruit, vege, fish, meals
- Sauces & spreads
- Cereals, rice, pasta, noodles, grains
- Herbs, spices, preserves
- Treats - crackers, biscuits, chocolate, chips, jellies etc
- Toothpaste, shampoo, conditioner, plasters, sun cream etc

- Other useful household items you might like to find in a prize hamper

### **Pre-loved books, toys and white elephant goods**

Please continue to bring in quality second hand items. No clothing this year thanks but we'd love books, toys, baby gear and useful household items. You can drop off any Monday morning between 8.30am and 9am or contact us to arrange another drop off / pick up - [pta@tkp.school.nz](mailto:pta@tkp.school.nz) / 021 222 5682

### **Home Baking**

We will send home a plate with each child the week of Nov 6. Please return your plate with baked goods on Fri 10 Nov (or by 9.45am on Sat 11 Nov for extra freshness).

### **Gala Roster**

It takes almost 100 volunteers to run the gala. We are grateful for every mum, dad, nan, koro, friend and neighbour who can lend a hand. The roster is broken into shifts so each family can help out and also enjoy some family time. There are all sorts of jobs from cooking BBQ, supervising a game, face painting, selling raffle tickets, making candy floss etc. We will find a job that works for you.

Please let us know how you can help by returning the form attached to the school office OR contacting [pta@tkp.school.nz](mailto:pta@tkp.school.nz) / 021 222 5682.

---

### **I can help at the Gala:**

Name

Phone number:

Email:

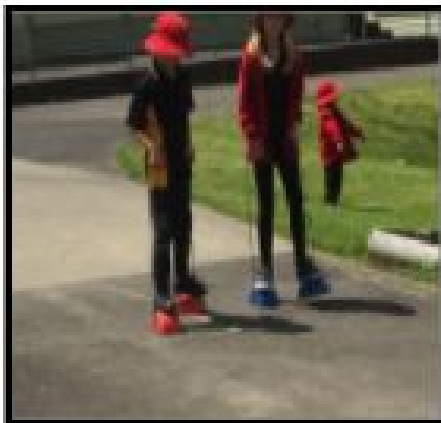
Please tick your to indicate your availability below:

- Friday 10th - Transport of furniture goods to school
- Fri 10th - Set up stalls after school
- Sat 11th - Early set up outside tents and signage from 7.30am to 10am
- Sat 11th - Help on a stall or activity between 9.45am and 12noon
- Sat 11th - Help on a stall or activity between 11.45am and 2pm
- Sat 11th - Pack up from 2pm to 4pm
- Mon 13th - Drop off furniture and tents back to local businesses

*From the Peer Mediators of Waikato Whanau*

*As peer mediators we walk around the school and help children solve their problems. As a part of our role as Peer Mediators we also look for children who show 'WE CARE' in the playground. As you can see in these photos children are co-operating with one another and being kind to one another - these are two important criterion when children are awarded the Peer Mediator Award!*

*By Waikato Whanau*



Well done to all our Peer Mediators for their dedication and efforts helping make our playground a safe and happy place!

### **Scholastic Book Fair**

Our final book fair opens next week in our school library. All proceeds from this go directly back into books for our children. The book fair hours are:

- Monday 6th November
  - 3.00pm - 4.30pm
- Tuesday 7th November
  - 8.30am - 9.00am 3.00pm - 4.30pm
- Wednesday 8th November
  - 8.30am - 9.00am 3.00pm - 4.00pm



## CHILDREN AND YOUTH

Entries Close Thursday 30th November 2017

Entries must be delivered between 6am and 10am to the Rugby Exhibition

Area on Show Day, Saturday 9th December 2017

Exhibitors are not permitted in the Exhibition Area after that time Entry Fee: \$1 per entry, per class. Only one entry per person, per class allowed in the following:

### Ages 3 to 4

**5019 Baking**—Decorate a cupcake

One cupcake decorated with a farming theme on a plastic plate.

### Ages 5 to 6

**5021 Gardening**— seeds grown in a pot

Starter pots and seeds are provided with growing instructions and will be available from the end of September on the completion of the entry form and receipt of the \$1 fee.

**5022 Baking**—Decorate a cupcake

One cupcake decorated with a farming theme on a plastic plate.

### Ages 10 to 12

**5030 Art and Craft**—Any medium, with the theme 'Summer in New Zealand'

**5031 Baking**—muffin

One Muffin, sweet or savoury displayed on a plastic plate

### Ages 13 to 15

**5035 Art and Craft**—Handmade gift

The gift can be made of wood or any materials but should not exceed the size of 50cm x 50cm.

**5036 Baking**—Slices or Brownies. 3 pieces cooked

Prizes in the Children and Youth categories are gift packs and vouchers donated by our generous sponsors, including Moosies Pizza

**5040 Snail racing is open to all.**

Children, adults and families can enter.

Bring your own snail or use the snails provided. Decorate your Snail for easy identification!

Call in at the information site for times and venue details.

NB This competition was very popular last year.



## Important dates...

- Grandparents Day - Friday 3rd November
- No School Lunches - Friday 3rd November
- Scholastic Book fair - from Monday 6th November
- Years 3-6 athletics - Wednesday 8th November
- Board of Trustees meeting - Wednesday 15th November, 6.30pm
- Year 6 camp and Year 5 leadership building - 27th Nov - 1st Dec

### Te Kauwhata Fitness Centre Swimming Lessons

Swim School – Registration forms are now available from the Fitness Centre, or contact the office on 8264090

and we can send you one.

Heated 25m pool, qualified swim coach.

Start's early November. Tues/Thursdays.

Swim platforms for smaller children. 4yrs and over.

Contact the office for more info.



## Hey Kids, do you want to try Golf?

Waikare Golf Club are once again running an introductory programme this summer

**Starts:** Tuesday 17th October - 5pm to 6pm  
Then every Tuesday or Wednesday (your choice) except for school holidays

**Ends:** End of March with daylight saving

**You Need:** To be Primary School age  
To wear sports shoes  
To bring \$10 for the whole programme

**We Will:** Provide all the gear  
Teach you to play golf  
Provide fun (and prizes)

Any questions, please contact the golf club office on

**826 3574**





## **WAIKARE JUNIOR CRICKET**

**Come & join us for a free introduction to Cricket.**

**Bring the family, a picnic blanket & enjoy an evening in the sun with friends.**

- Skills, coaching and games
- All abilities welcome
- 6 - 12 year olds
- Boys & Girls
- 3 games for different age groups
- Equipment provided
- **Free gift** for every child that signs up
- A BBQ & the Squash club bar will be open to make it a really social event for all the family

**When:** 5pm Friday the 10th November (Running for 5 weeks)

**Where:** The Domain next to the Squash club, Te Kauwhata.

For further information contact: Waikare Junior Cricket FB page or phone 021 403042/ 021 930083.



Te Kauwhata Primary School  
Wira Street, Te Kauwhata  
Phone: 07 8263564 Fax: 07 8263850  
email: [office@tkp.school.nz](mailto:office@tkp.school.nz)  
Website: [www.tkp.school.nz](http://www.tkp.school.nz)





**HEALTHY HOME BAKING**

# FILL UP WITH FIBRE



Fibre helps us feel full for longer and keeps our digestive system healthy. Increase fibre by replacing  $\frac{1}{2}$  the white/plain flour with wholemeal flour.

Developed by Sport Waikato 2017

**HEALTHY HOME BAKING**

# GET SPICY




Sugar in recipes can be reduced by  $\frac{1}{3}$  to  $\frac{1}{2}$  the suggested amount. Add spices like cinnamon, allspice or nutmeg for extra flavour.

Developed by Sport Waikato 2017

**Bring your ASB School Banking Envelope to School**

Any spare coins will do. If you save \$1 each week in Term Three, you will have \$10 for the school holidays!



ASB Bank Limited.  
Visit [asb.co.nz/schoolbanking](http://asb.co.nz/schoolbanking) for terms and conditions.

**ASB**

**Te Kauwhata Childcare**



## Now offering 30 hours **FREE**

Conditions apply

We provide quality care and education, where learning and fun become one!

*Call in and visit anytime*

**4 Learning Centre**

Hours of Operation: 8.00-5.30 Monday-Friday ■ 9 Mahi Rd, Te Kauwhata  
Ph: 626 3280 ■ Email: [tkchildcare@xtra.co.nz](mailto:tkchildcare@xtra.co.nz)